

WHAT'S INSIDE:

SPRING APPEAL
Help us Unlock
Matching Funds!

WRAP-UP of Inclusive
Theatre Company and
Cabaret Season

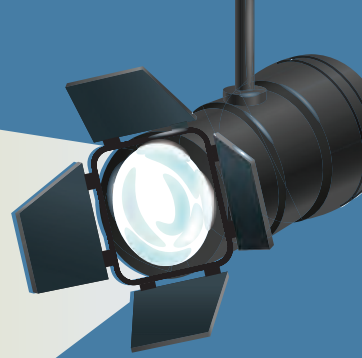
INTERVIEW with
Chris Pagonis

WELCOME Catie-Reagan
Palmore, Farewell to
Abby Madden



The Spotlight

A newsletter for an inclusive world



SPRING 2021



HELP US UNLOCK MATCHING FUNDS!

Broadway shut down but ArtStream shows opened on time.

Schools closed, but ArtStream classes stayed open.

For over a year, ArtStream's talented Teaching Artists proved the power of online theatre to build resilience, spark creativity, and inspire teamwork.

Last year, when ArtStreamers were quarantined in their homes feeling lonely and confused, ArtStream's Artful Moments began. By the time these on-demand video programs ended 26-weeks later, the Salute to ArtStream was a shining memory, classes were expanding, and auditions for the 2021 performance season were beginning. Thanks to donors like you, ArtStreamers spent this year connected, engaged, and learning new skills.

As we come to the end of a successful online season featuring **four** Cabaret Company shows and **six** Inclusive Theatre Company original musicals, along with more than **800** confidence-building communication and social skills classes for over **1,200** students, ArtStream's creative lights are still shining brightly, thanks to you.

As the memory of our last drive-in theatre fades and summer classes engage new students, we can see a bright and creative year ahead. We invite you to join us by donating to our Summer Campaign. Your gift will help our pandemic champions rise to every challenge.

When you give by July 20, 2021, the Bradley family and board member Kristen Chou will match your gift up to \$13,000. Please give online at art-stream.org/donate or use the enclosed envelope.

SEASON HIGHLIGHTS

• 10 online performances

• 5 Drive-In Theatre Events

Thanks to the MD State Nonprofit Recovery Initiative and the Jim and Carol Trawick Foundation, we were able to provide scholarships to every student who needed one.

ArtStream, Inc. | 8401 Connecticut Ave., Ste. 1230 | Chevy Chase, MD 20815
www.art-stream.org | info@art-stream.org | 301-565-4567

YOU'RE INVITED! Join our online classes at art-stream.org/take-a-class



INTRODUCING: Chris Pagonis
Chris joined ArtStream in 2018. At 29,
he is an Inclusive Theatre Company
actor and enjoys classes and
Super Social Saturdays.

ArtStream (AS): How did you get started at ArtStream?

Chris: My mom! She signed me up without even telling me! She signed me up unannounced! That is what she actually did! She literally signed me up without me knowing right away! At first, I was like, "Am I really going to enjoy this?"

That's how I got into ArtStream. The first class I went to was Super Social Saturday. I tried it and I really liked it!

I saw my friend Langston there. I met other people. Then I decided to go back because I wanted to be with all my friends.

AS: What activities do you like to do at ArtStream?

Chris: I like all the classes that I am doing, like Scriptwriting, like Creating Your Own Character. I'm really looking forward to starting my audition for the Inclusive Theatre Company at ArtStream. I already know what I am going to do ... comedy!

AS: How do you create your character for the Inclusive Theatre Company shows?

Chris: Last year, I wanted to change it up and be evil with my character. The ArtStream show before that one, I think the director picked my name for me. This year I picked my own name, Barry Voldemort the Evil Wizard!

AS: What do you like best about acting with ArtStream?

Chris: Getting our scripts, looking forward to what we are going to talk about when it comes to our show. Like, what kind of topics we are going to come up with for the next show. We make a big list and then we have to narrow it down. Because in our first show, we were supposed to do a magic/grocery store/ice cream thing, but guess what happened? Instead of the magic part, the directors cut that out. I noticed that and I'm like, "Why?" They cut that out, I don't know why they did that. Then this year we did A Tempest Tale and that had a lot of magic.



AS: What would you tell someone who isn't sure if they will like ArtStream?

Chris: Try it, see if you really like it! If you really like it, I would say, "Keep going."

At ArtStream you are going to have so much fun, you are going to meet a lot of people. The ArtStream directors can help you out with your lines and what you want to come up with for your character that you pick. It is a team.

AS: Have you made new friends at ArtStream?

Chris: I have been meeting a lot of new friends at ArtStream! My new friends make me feel happy. We used to go to the movies, go to Dave and Busters, go to the Caps games. Now I have to wait until this pandemic is over with.

AS: What are some of your favorite parts about ArtStream?

Chris: Meeting new friends. Seeing what we come up with for our shows.

I remember our first show, Shops and Robbers – that was a great one. My shoes that I had they almost ripped because me and Langston had to do a lot of running around behind the flats and stuff (sets and backdrops). I was like, "Oh please, do not fall apart on me." I had to keep acting, but I kept looking down and worrying about my shoes!

Read more from this interview at
www.art-stream.org/actor-spotlight-chris/

ARTSTREAM'S ONLINE SEASON WAS A SUCCESS!

Fall Maryland Cabaret presented *Pandemic Champions* directed by Mehdi Raoufi.



Alexandria Inclusive Theatre Companies presented *One Small Step* directed by Patricia Woolsey and *The Haunting at Rosecliff Manor* directed by Elizabeth Cronin.



Spring Virginia Cabaret presented *Sweet Friends of Mine* directed by Emilia O'Connor.



Gaithersburg Inclusive Theatre Companies presented *Prom's the Word* directed by Kristen Pilgrim and *I'll See You Somewhere in Dreamland* directed by Madeleine Regina.



Spring Maryland Cabaret presented *ArtStream Roadshow* directed by Mehdi Raoufi.



ENJOY THESE SHOWS ON YOUR HOME SCREEN AT
[ART-STREAM.ORG/BUY TICKETS/WATCH ONLINE](https://art-stream.org/buy-tickets/watch-online)

ARTSTREAM STAFF UPDATE

Welcome to **Catie-Reagan Palmore**, our new communications manager who started May 10, 2021.

Catie-Reagan's most recent positions were as administrative coordinator at Virginia Commonwealth University along with membership coordinator at James River Writers. She serves as an associate board member for the Children's Museum of Richmond.

She is experienced in public relations, creative design, branding, and outreach. She has successfully used social media to grow and expand community online. She also has experience identifying new audiences and developing virtual events. Catie-Reagan is a talented writer who has created newsletters, press releases, and blog posts. Along with being an arts advocate, Catie-Reagan believes in giving back to the community and working to enact change by empowering others to find their voice.

Catie-Reagan has an M.S. in strategic design and management from Parsons School of Design and a B.A. theatre arts from Virginia Tech, and she completed a Women in Leadership Certificate at Cornell University.

You can reach Catie-Reagan at c.palmore@art-stream.org or 301-754-6871.

On March 29th, we were sad to say farewell to ArtStream's communications manager, **Abby Madden**, who has left to start exciting new jobs.



PAUL M. ANGELL
FAMILY FOUNDATION

ArtStream, Inc., is a 501 (c) (3) nonprofit arts organization, supported by individual donors and by funding from the Montgomery County Government and the Arts and Humanities Council of Montgomery County, and by the Maryland State Arts Council, on the web at msac.org/recognizing-our-grants. Additional funding comes from The Morris and Gwendolyn Cafritz Foundation.

Additional funding for the Cabaret Companies comes from Ms. Kristen N. Chou, ArtStream Board of Directors, Ning Solutions, Inc.

Fall Virginia Cabaret presented
NEVER NEED A REASON
directed by Emilia O'Connor.



Silver Spring Inclusive
Theatre Companies presented
UNA-FJORD-ABLE
directed by Natalie Zanin and



ONCE UPON A TIME IN EGYPT
co-directed by Kathryn Hamilton-
Lodge and Rye Ellis.

